

European Social Survey

**MEASURING PUBLIC
ATTITUDES,
INFORMING PUBLIC
POLICY**

**Gaining new insights
into societal
challenges by
combining social
survey and
environmental data**



Dr Sarah Butt, ESS ERIC Deputy Director
City, University of London
4 June 2019

- Academic cross-national survey measuring attitudes
- Face-to-face interviews every two years (since 2002)
- Over 380,000 interviews completed
- 8 rounds completed in 36 countries
- Currently undertaking Round 9 fieldwork
- Each round: core questions plus 2 rotating modules
- All data free for non commercial use
- Over 135,000 registered users
- 3,904 academic publications use data (2004-17)



ESS and the environment

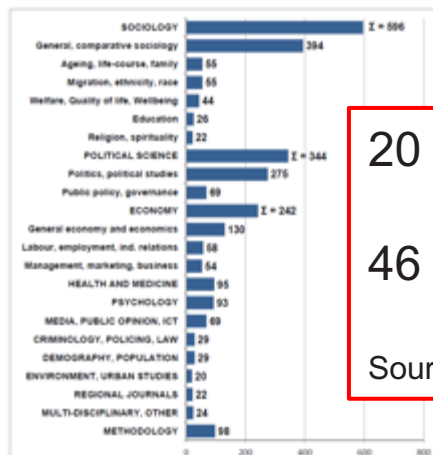
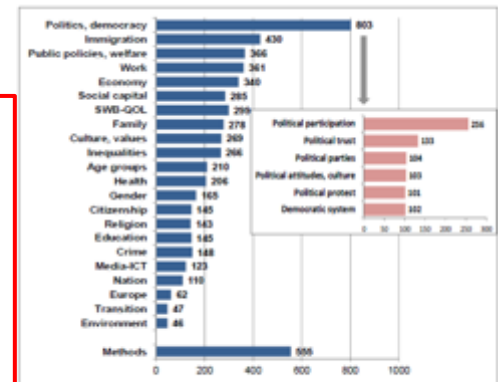


Figure 3: ESS outreach into academic fields, based on journal typology (2003-2016, N=1661)

20 publications in environmental journals

46 publications on topic of environment

Source: Malnar, B (2017) ESS Bibliographic Report



Figures 5a, 5b: Number of publications addressing individual topics (2003-2016, N=3554, topics double coded in each publication)

ESS and the environment

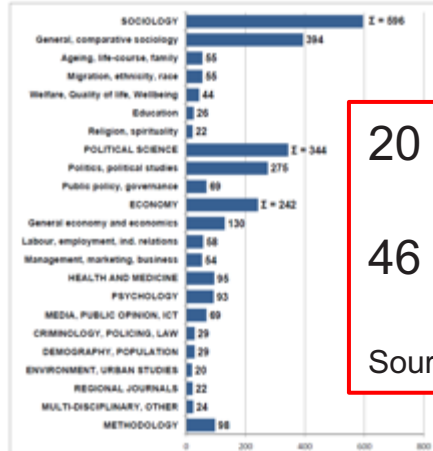
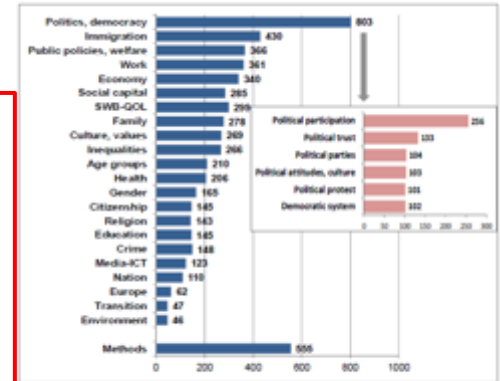


Figure 3: ESS outreach into academic fields, based on journal typology (2003-2016, N=1661)

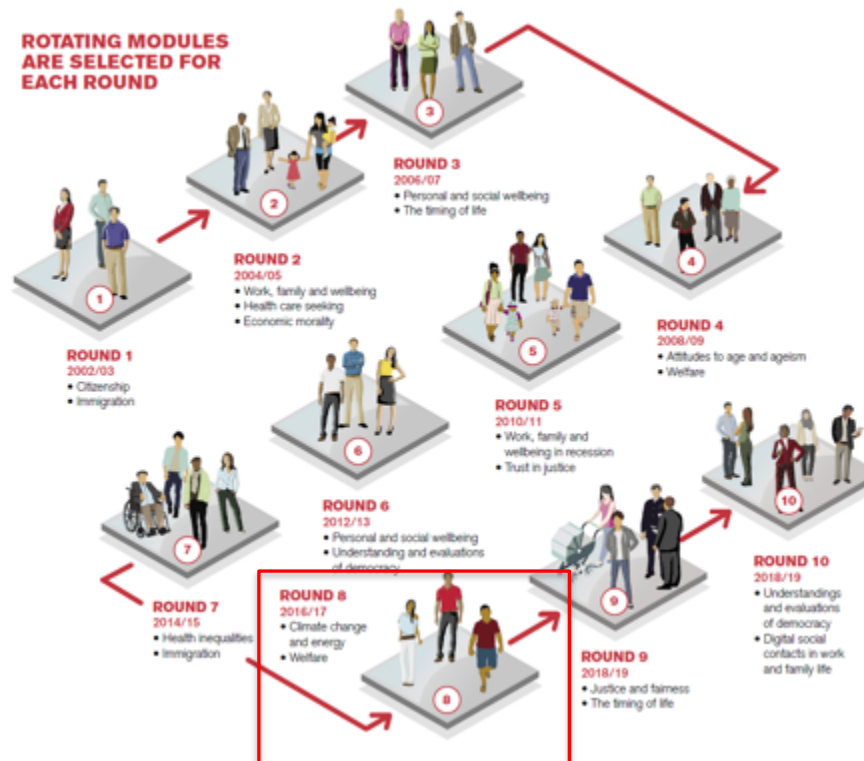
20 publications in environmental journals

46 publications on topic of environment

Source: Malnar, B (2017) ESS Bibliographic Report



Figures 5a, 5b: Number of publications addressing individual topics (2003-2016, N=3554, topics double coded in each publication)



Scope for this to increase with R8 module on climate change and energy use



seriss

SYNERGIES FOR EUROPE'S
RESEARCH INFRASTRUCTURES
IN THE SOCIAL SCIENCES

www.seriss.eu
[@SERISS_EU](https://twitter.com/SERISS_EU)

Aims to:

- Strengthen social science research across Europe and beyond by overcoming fragmentation and fostering interoperability, harmonisation and innovation
- Equip social science infrastructures to play a major role in addressing key societal challenges and ensure that national and European policy making is built on a firm socio-economic evidence base
- Promote the value of the social sciences to the wider research community, and policymakers



This project has received funding from the *European Union's Horizon 2020 research and innovation programme* under grant agreement No 654221.

Social Sciences and Humanities Open Cloud

- Creating Social Sciences and Humanities (SSH) part of European Open Science Cloud (EOSC)
- Maximising re-use of data through Open Science and FAIR principles
- Interconnecting existing and new infrastructures



SSHOC, "Social Sciences and Humanities Open Cloud", has received funding from the European Union's Horizon 2020 project call H2020-INFRAEOSC-04-2018, grant agreement # 823782.

A source of data on

**PUBLIC ATTITUDES TO
THE ENVIRONMENT
AND ENVIRONMENTAL
POLICIES**

Survey are an important source of data on what people think

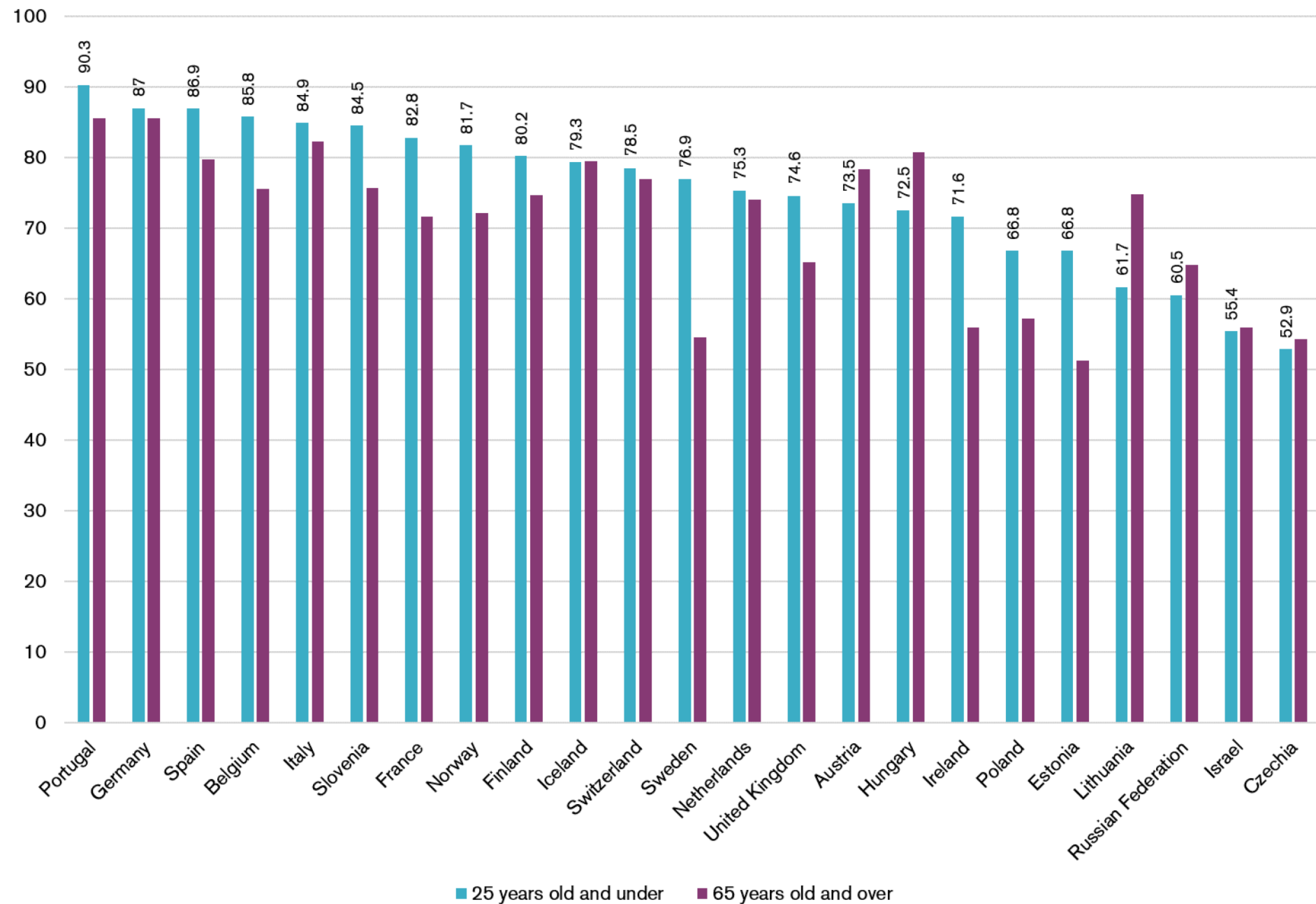
“When considering new policies, governments in the past were often ignorant of their citizens’ preferences and needs. Now European governments have a source for counteracting that ignorance.”

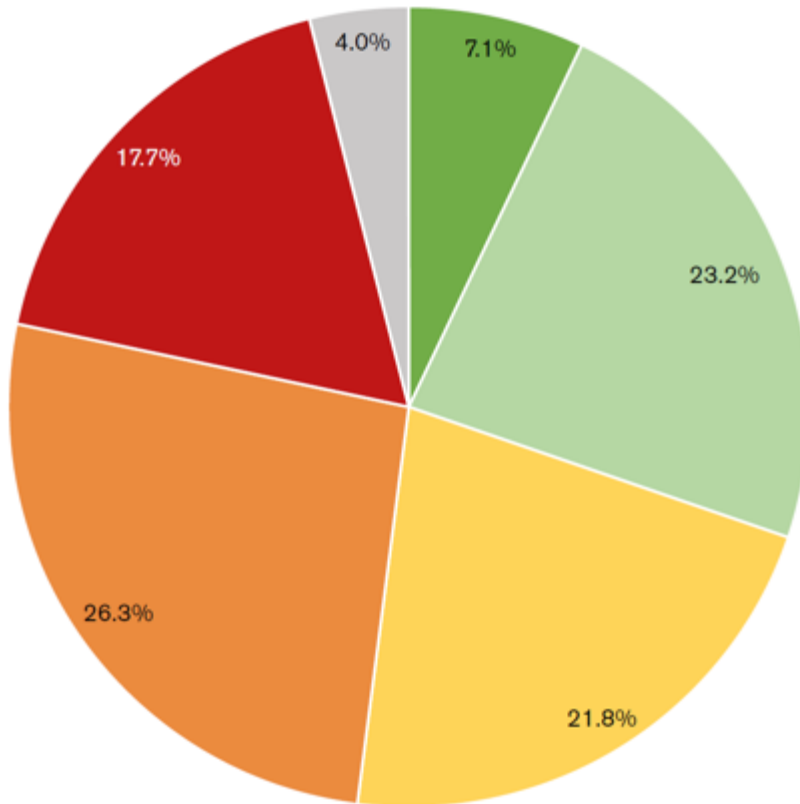
Professor Sir Roger Jowell CBE

Co-founder and first Director of the ESS

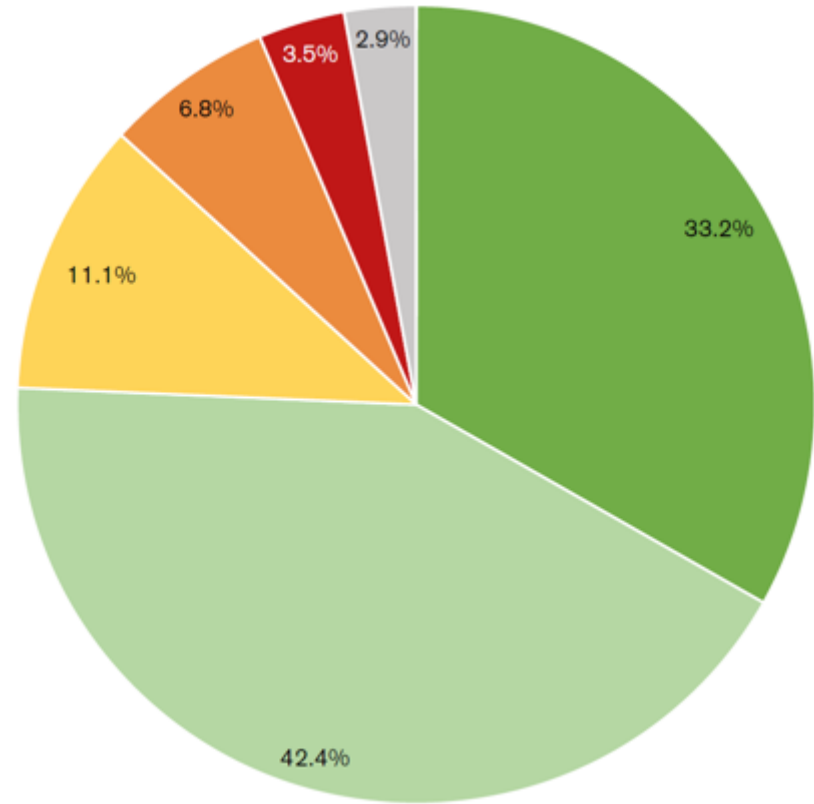
- **ESS:** Round 8 (2016/17) 30 item rotating module on attitudes to climate change and energy
2-3 items added to core questionnaire from 2020/21
 - Climate change beliefs
 - Energy preferences and concerns for energy security
 - Personal efficacy beliefs
 - Environmental policy preferences
- **International Social Survey Programme (ISSP)** 60 item module on environment 1990, 2000, 2010, 2020 (<http://w.issp.org/menu-top/home/>)
- **European/World Values Study (EVS/WVS)** Short environmental attitudes battery (<https://europeanvaluesstudy.eu/>)

Worried about climate change
ESS Round 8 (2016/17)





Increase fossil fuel taxes



Subsidise renewables

- Strongly in favour
- Somewhat in favour
- Neither in favour nor against
- Somewhat against
- Strongly against
- DK/refusal

In favour of increased taxes on fossil fuels (ESS Round 8)
Fossil fuel energy consumption (World Bank)



A source of data on
**IMPACT OF THE
ENVIRONMENT ON
SOCIETY**

Surveys are a source of microdata on health and wellbeing ...

- **Subjective:** Core questions on subjective wellbeing, self-reported health (ESS, European Quality of Life Survey (Eurofound))
- **Objective biomeasures:** Physical measurement, biomarkers, wearables (SHARE - <http://www.share-project.org/special-data-sets/biomarker.html>)



... which can be combined with environmental data

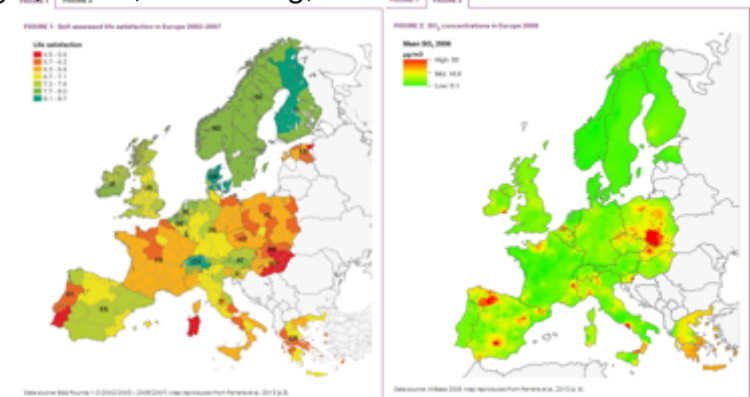
- Significant associations found between various measures of regional air quality and life satisfaction
- Geographic variation in temperature /humidity correlated with life satisfaction as well as willingness to pay to tackle climate change

Cuñado, Juncal, and Fernando Pérez De Gracia. "Environment and happiness: New evidence for Spain." *Social Indicators Research* 112.3 (2013): 549-567.

Ferreira, Susana, et al. "Life satisfaction and air quality in Europe." *Ecological Economics* 88 (2013): 1-10.

Murray, Thomas, David Maddison, and Katrin Rehdanz. "Do Geographical Variations in Climate Influence Life-Satisfaction?." *Climate Change Economics* 4.01 (2013): 1350004.

Wang, Fenglong, and Donggen Wang. "Place, geographical context and subjective well-being: State of art and future directions." *Mobility, sociability and well-being of urban living*. Springer, Berlin, Heidelberg, 2016. 189-230.



Thing to think about

**COMBINING SOCIAL
SURVEY AND
ENVIRONMENTAL
DATA**

- 





About ESS
Feedings
Methodology
Data and Documentation
Learn more

Home
Data and Documentation
ESS Multilevel Data
(11/11/2016)

Data

- Multilevel Download
- Online Browsing
- Static Download

Documentation

- About this resource
- About the ESS registers
- Confidential variables
- Indices

ESS Multilevel Data

How created the ESS.

The purpose is to make it easier for the research community to analyze the ESS respondents with reference to the ESS data files. The ESS resource contains data of a) individuals (the ESS respondents) and regions (2) countries. The ESS survey data is the point of departure for this resource. The purpose is to facilitate the task of adding data on variables and regions to the ESS survey data. **How information can be added**

There are two approaches into the ESS.

Download Data from ESS	Regional Data from ESS
ESS survey data	ESS survey data
ESS regions ¹	ESS regions ²
ESS regions ³	ESS regions ⁴
ESS regions ⁵	ESS regions ⁶

1 = No [Online Browsing](#) 2 = No [Multilevel Download](#)

1 = Most countries have a regional variable that is possible to map to the NUTS nomenclature. Some countries use NUTS 1, others NUTS 2 or 3, and the data is therefore collected from different data. **How about the ESS regions.**

Index

The regional variables are downloaded every second year. The variables downloaded in 2013, have been merged with the ESS and ESS survey data. The variables downloaded in 2014, have been merged with the ESS survey data. The variables downloaded in 2015, have been merged with the ESS survey data. The variables downloaded in 2016 have been merged with the ESS survey data.

How use the regional variable already added to an ESS record.

If the documents have been sorted data, it is possible that the same variables will have different values. The variables downloaded in 2013, were sorted in the data downloaded in 2014, 2015, 2016, or 2017.

The documents can origin different.

“ Public attitudes matter in democratic societies. They reflect what citizens believe, want, fear and prefer. They are difficult to measure, are often unexpressed, and cannot be inferred from electoral choices alone... This is why the ESS exists. It is specifically designed to meet the exacting demands of academics, policymakers and civil society alike for rigorous cross-national data on social attitudes and behaviour ”

Professor Sir Roger Jowell,
Founding Director of the European Social Survey

CONTACT

✉ sarah.butt.1@city.ac.uk

🌐 www.europeansocialsurvey.org

🐦 @ESS_Survey

📘 EuropeanSocialSurvey

in european-social-survey