

ENVRI BEYOND 2020

SANNA SORVARI SUNDET



Supporting environmental research
with integrated solutions
- **the Earth is our lab**

Master Plan 3. Access to Research Infrastructures
for interdisciplinary access

Guidelines for
Access to RIs

Model **architecture**
2. Data for
Science

Policy models for
persistent identifiers

RI data **identification**
& **citation**

Optimized **data processing**

Common **sensors**

1. Technical Innovations

Network enabled sensors

Prototype **common platforms**

Time-series analysis methods

Remote sites **reliability** improvement

Basis of **mutual deployment**
of observatories

4. Societal Relevance and Understanding
Ethics
Guidelines

Environmental
literacy

Citizen science

Staff
exchange
program

5. Knowledge
transfer

Education material

Training of RI personnel

Community Platform

6. Communication and

Strategy
development

Dissemination

Liaisons between
RIs and users

Cluster level **cooperation**

plus
ENVRI

IF IT AIN'T BROKE, DON'T FIX IT



INGREDIENTS FOR SUCCESSFUL ENVRI COMMUNITY WORK



1. RELEVANCE AND IMPACT

**THERE
IS NO
PLANET B.**

Emmanuel Macron 2018





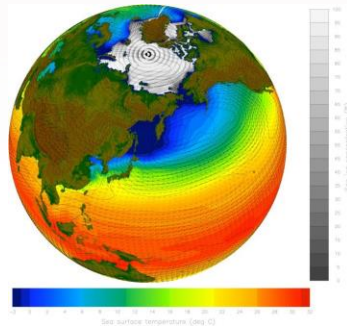
**OBSERVATIONS
EXPERIMENTS
MODELLING**

INFORMATION

KNOWLEDGE

DECISIONS

ACTIONS





IPBES



Framework Convention on
Climate Change

SBSTA

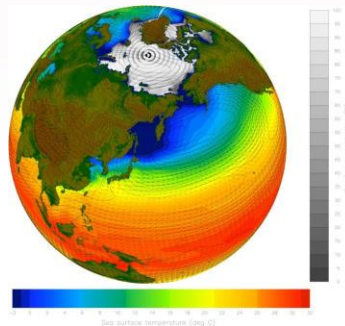


INFORMATION

KNOWLEDGE

DECISIONS

ACTIONS



COPERNICUS
GEO-GEOSS
WMO-WIS



2. REPRESENTATION

28 RESEARCH INFRASTRUCTURES AND RI NETWORKS





3. COMMUNITY

STRONG COMMUNITY – MOTIVATION TO WORK TOGETHER AND COLLABORATE





4. DEMONSTRATED OUTCOMES



Technology development
Data for science/ENVRI-FAIR
Guidelines for access
Guidelines for ethical
framework
Citizen science toolkit
E-learning platform
Staff exchange programme
ENVRI community platform
BEERi – a body of ENVRI

ENVRI SUSTAINABILITY PLAN

**COMMON
VISION**

**ENVRI
STRATEGY**



ENVRI VISION

*ENVRI – the large-scale cluster of collaborating European environmental research infrastructures – **contributes to the grand societal challenges by providing in a systemic way high-quality multidisciplinary research data, services and expertise for scientific breakthroughs supporting the mitigation of societal risks.** With these resources, it is the ambition that by 2030 ENVRI is internationally strongly positioned with its attractive service portfolio and access opportunities for researchers, private sector and policy-makers.*



APPROACH

Promotion of systemic
Earth system science

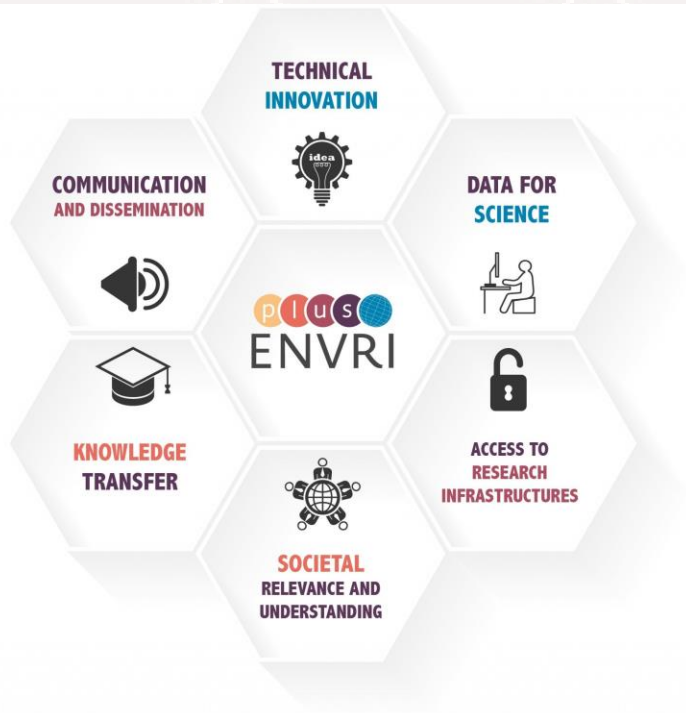


Demonstration of the strengths and
significance of multi/interdisciplinary
science

Preparation of RI landscape
to meet the requirements of the
multi/interdisciplinary science

Providing cross-RI services for the user

THEMES AND TOPICS



VISIBILITY AND COMMUNICATION

FRAGMENTED FUNDING LANDSCAPE

POSITIONING OF RIS


COLLABORATION OF RIS

ORGANIZATIONAL STRUCTURE





ENVRI BEYOND 2020



KEY PROVIDER OF GROUND-BASED OBSERVATION AND
EXPERIMENTAL PLATFORMS, EO AND ENVIRONMENTAL DATA,
SERVICES AND EXPERTISE



Horizon 2020



Grant agreement No 654182



WELL-RECOGNISED PARTNER FOR EUROPEAN AND
INTERNATIONAL COLLABORATION



Horizon 2020



Grant agreement No 654182



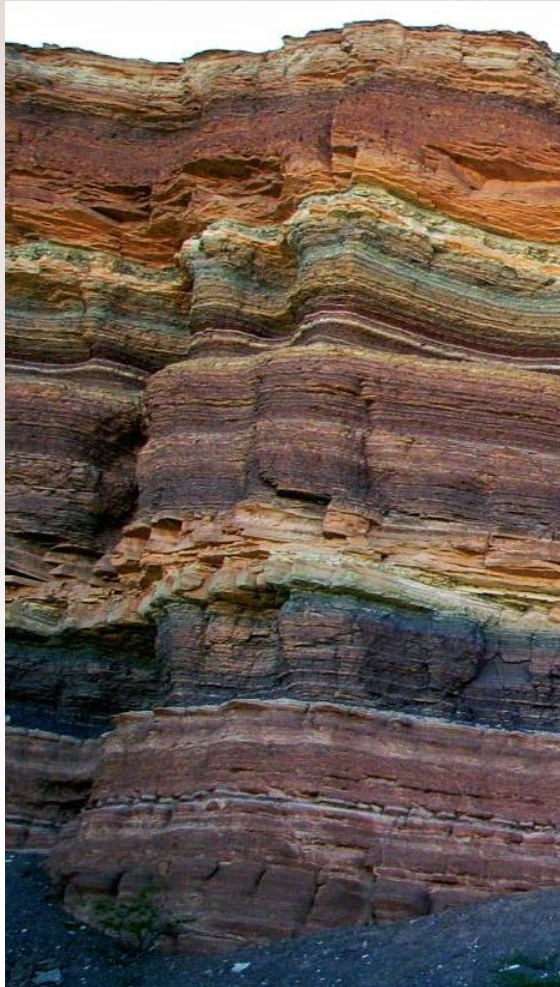
COMMON ACTIVITIES AND PROJECT PORTFOLIO (E.G. ENVRI-FAIR)



Horizon 2020



Grant agreement No 654182



ENVRI BEYOND 2020 REQUIRES:

Individual RIs with catalogue of services, long-term sustainability (solid resources), capacity for interoperability

Strong and motivated ENVRI community

Continuation of collaboration among RIs

- Common activities, new development actions, knowledge transfer and sharing the best practices

Revised framework for collaboration

- Agreed organizational framework

THANK YOU



Horizon 2020

