

WP11 – PHYSICAL ACCESS TO RIs

ENVRIplus mult-disciplinary test platforms: SOERE-ACBB

SOERE-ACBB Systems of Observation and Experimentation
in Environmental Research, Lusignan site



Geographical localisation- 46°25'12,91" N; 0°07'29,35" E

Operating institute - National Institute for Agricultural Research (INRA)

Co-located activities of ICOS, AnaEE

Main purpose: Land use change, C and N biogeochemical cycle, biodiversity.

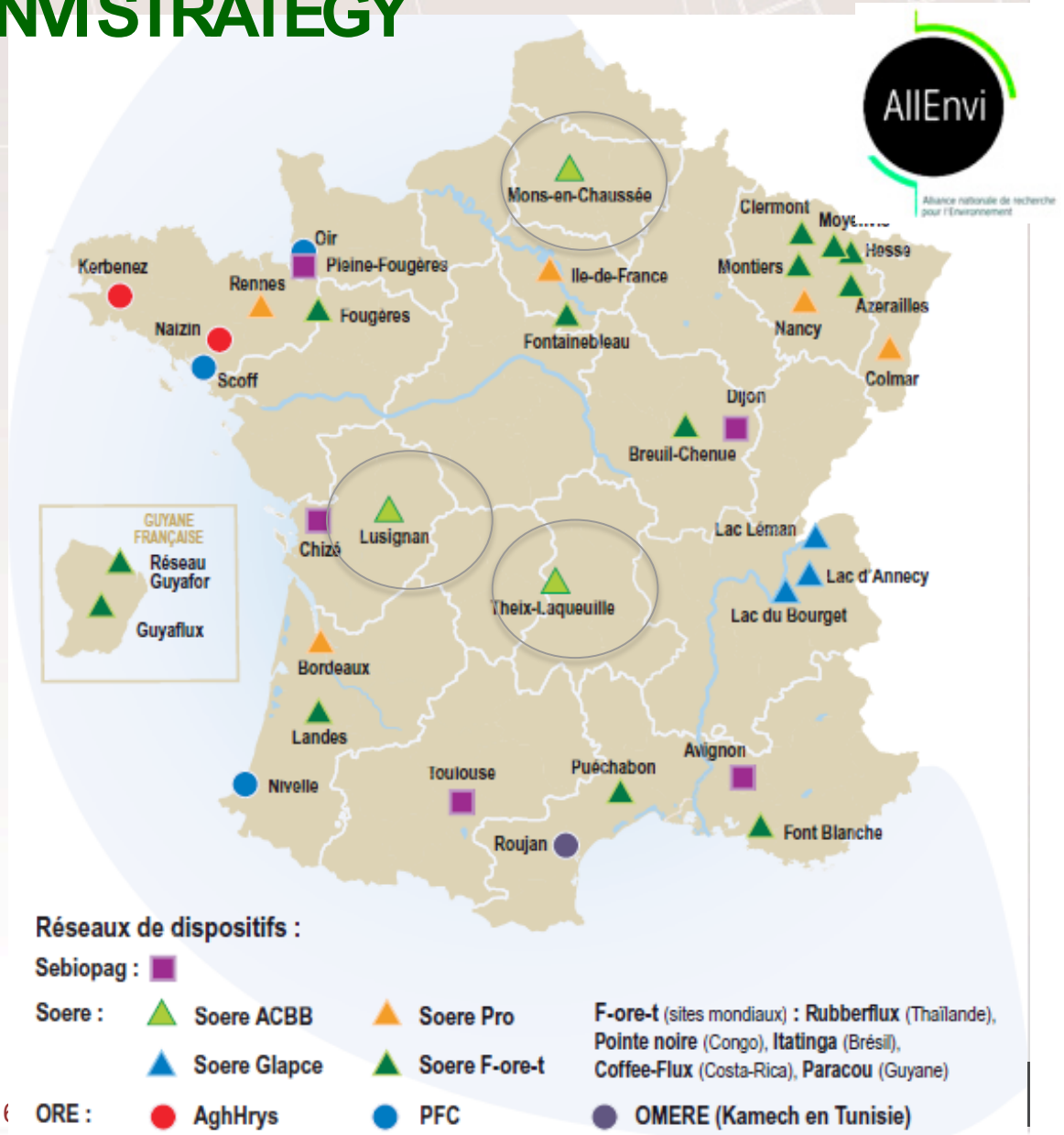
Ecosystem type: *Agricultural site, grassland, arable crops.*

Experimental treatments: Rotation, fertilization, grazing, mowing.



IN NATURA: SOERE SUPPORTED BY INRA, WITHIN THE FRAMEWORK OF ALLENVI STRATEGY

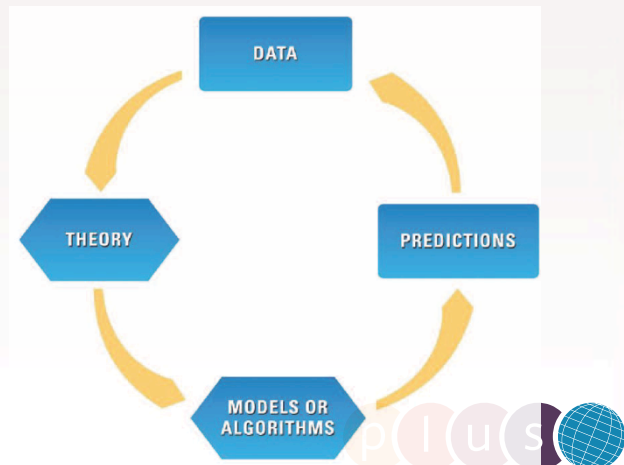
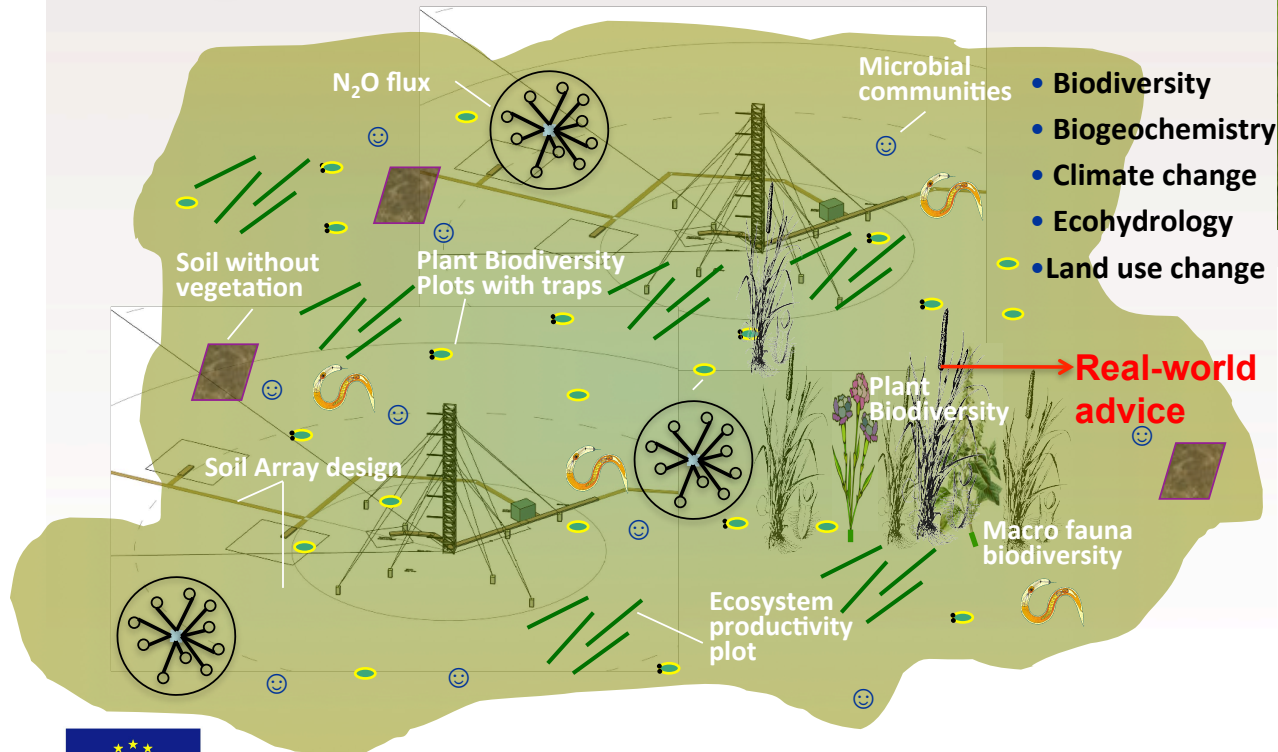
A network of field facilities dedicated to long-term observations and experiments for environmental research



SOERE ACBB

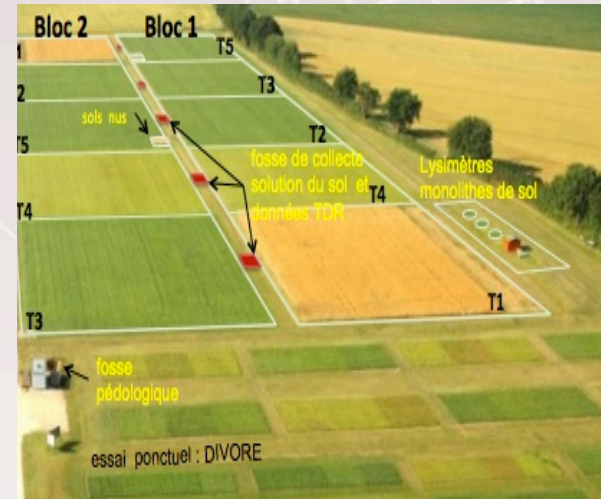
Relevant research area and expertise: why is the station unique in each RI domain represented: Allowing coupling different processes & confronting short term versus long-term

Integrated experimental platform



SERVICES-INSTRUMENTATION

- Access to the sites
 - Ecosystem differentiation,
 - historical data,
 - Hosting capacities
- Access to sample archive for time serie analysis
- Data base with long term observation
- Fully equipped measurement site:

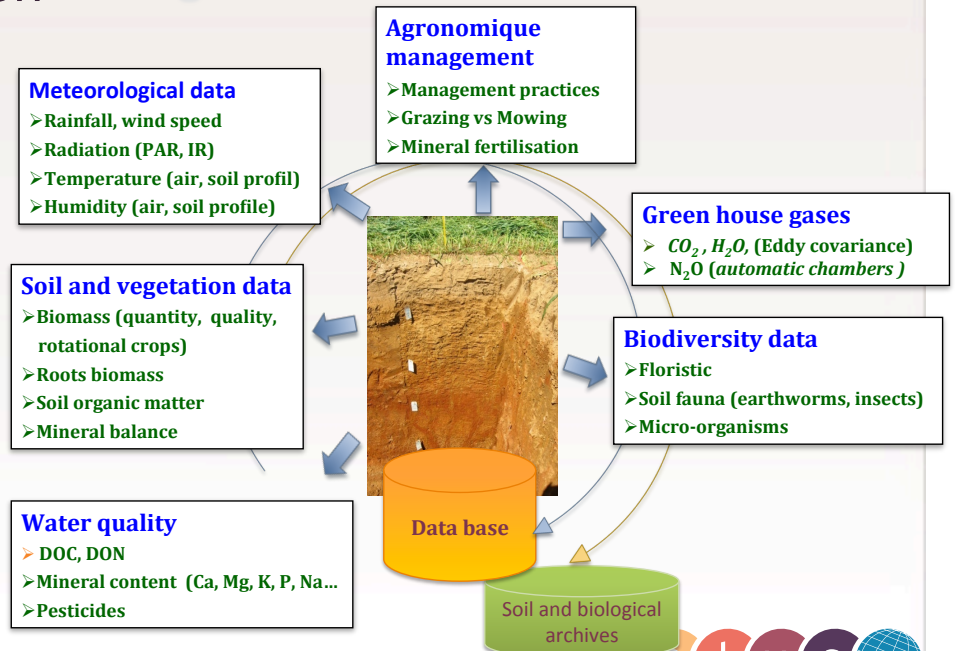


Long-term records and measures



Soil

← 4m



Past experience in TNA: FP7 ExpeER, Eofinders

<http://www.expeeronline.eu/expeer-call.html>

<http://esdac.jrc.ec.europa.eu/projects/ecoFinders>

Expectations from ENVRI+TNA: potential cross-domain studies

- **studying whether it is possible to make predictions consistent with what is observed on the site without too much specific calibration**
- **Soil warming manipulation and C stability and fluxes (+4°C warming)**
- **Land use management and aerosols dynamics**
- **Crops responses to concomitant increases in the abundances of the CO₂ and ozone**

